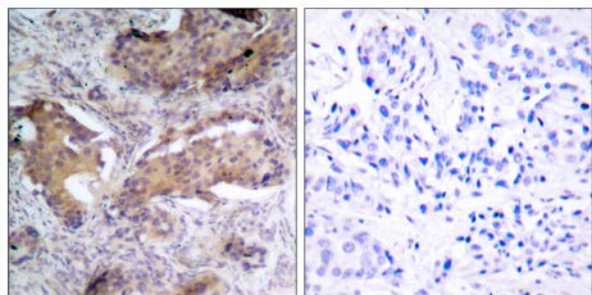




## PTEN (Phospho-Ser370) Antibody

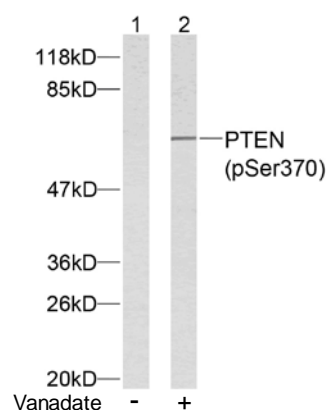
E011062

- Catalog Number:** E011062-1, E011062-2
- Amount:** 50µg/50µl, 100µg/100µl
- Form of Antibody:** Rabbit IgG in phosphate buffered saline (without Mg<sup>2+</sup> and Ca<sup>2+</sup>), pH 7.4, 150mM NaCl, 0.02% sodium azide and 50% glycerol.
- Storage/Stability:** Store at -20°C/1 year
- Immunogen:** The antiserum was produced against synthesized phosphopeptide derived from human PTEN around the phosphorylation site of serine 370 (D-V-S<sup>P</sup>-D-N).
- Purification:** The antibody was affinity-purified from rabbit antiserum by affinity-chromatography using epitope-specific phosphopeptide. The antibody against non-phosphopeptide was removed by chromatography using non-phosphopeptide corresponding to the phosphorylation site.
- Specificity/Sensitivity:** PTEN (phospho-Ser370) antibody detects endogenous levels of PTEN only when phosphorylated at serine 370.
- Reactivity:** Human, Mouse, Rat
- Applications:** WB: 1:500~1:1000 IHC: 1:50~1:100
- Swiss-Prot No. :** P60484
- References:** Al-Khouri AM, et al. (2005). J Biol Chem.280 (42):35195-35202.  
Miller SJ, et al. (2002). FEBS Lett. 528(1-3): 145-153.  
Torres J, et al. (2001). J Biol Chem.276 (2): 993-998.  
Vazquez F, et al. (2000). Mol Cell Biol.20 (14): 5010-5018.



P-Peptide                      -                      +

Immunohistochemical analysis of paraffin- embedded human breast carcinoma tissue using PTEN (phospho-Ser370) antibody (E011062).



Western blot analysis of extracts from HeLa cells using PTEN (phospho-Ser370) antibody (E011062).

**For Research Use Only**