



BRCA1 (Phospho-Ser1524) Antibody

E011117

Catalog Number: E011117-1, E011117-2

Amount: 50µg/50µl, 100µg/100µl

Swiss-Prot No. : P38398

Form of Antibody: Rabbit IgG in phosphate buffered saline (without Mg²⁺ and Ca²⁺), pH 7.4, 150mM NaCl, 0.02% sodium azide and 50% glycerol.

Storage/Stability: Store at -20°C/1 year

Immunogen: The antiserum was produced against synthesized phosphopeptide derived from human BRCA1 around the phosphorylation site of serine 1524 (Y-P-S^P-Q-E).

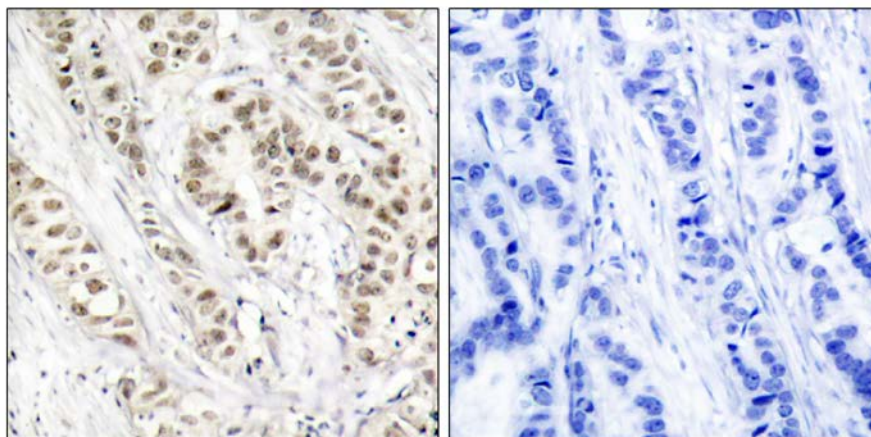
Purification: The antibody was affinity-purified from rabbit antiserum by affinity-chromatography using epitope-specific phosphopeptide. The antibody against non-phosphopeptide was removed by chromatography using non-phosphopeptide corresponding to the phosphorylation site.

Specificity/Sensitivity: BRCA1 (phospho-Ser1524) antibody detects endogenous levels of BRCA1 only when phosphorylated at serine 1524.

Reactivity: Human

Applications: IHC: 1:50~1:100

References: Lin SY, et al. (2004) Proc Natl Acad Sci U S A, 101(17): 6484-6489
Zhang J, et al. (2004) Mol Cell Biol; 24(2): 708-718
Beger C, et al. (2001) Proc Natl Acad Sci U S A; 98(1): 130-135
Gardner K, et al. (2001) Breast Cancer Res; 3(1): 11-13
Zheng L, et al. (2001) Proc Natl Acad Sci U S A; 98(17): 9587-9592



P-Peptide

-

+

Immunohistochemical analysis of paraffin-embedded human breast carcinoma tissue, using BRCA1 (phospho-Ser1524) antibody (E011117).

For Research Use Only